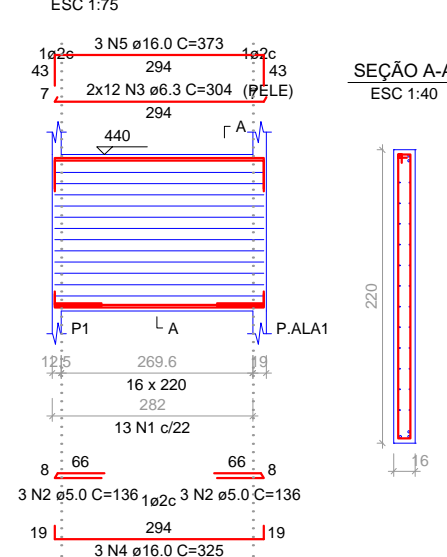
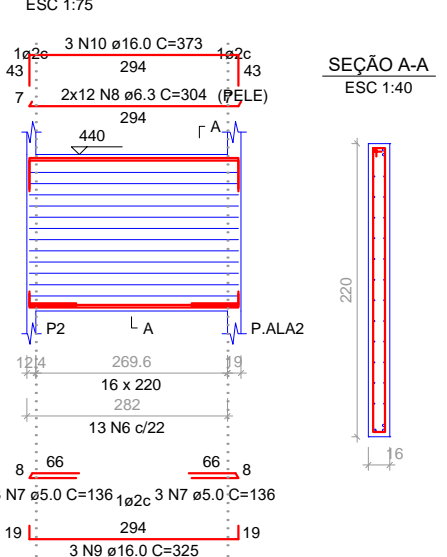


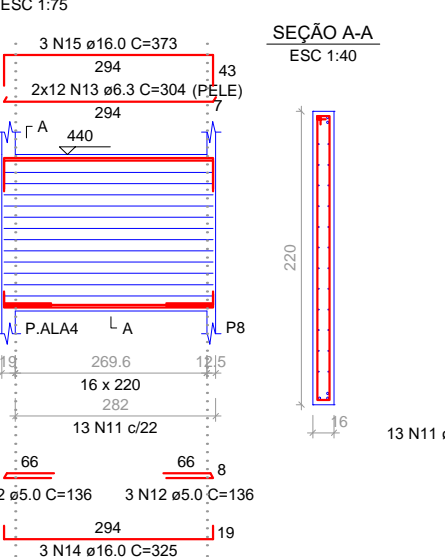
VI.ALA1



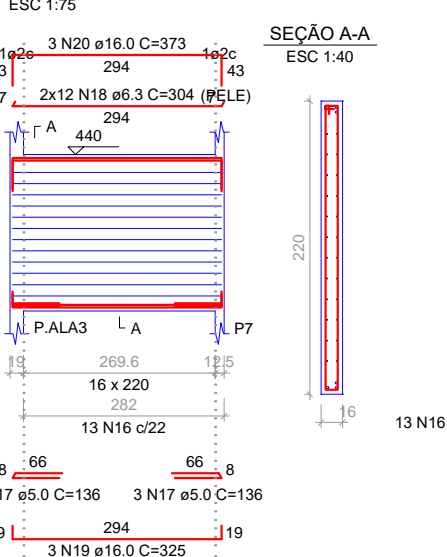
VI.ALA1A



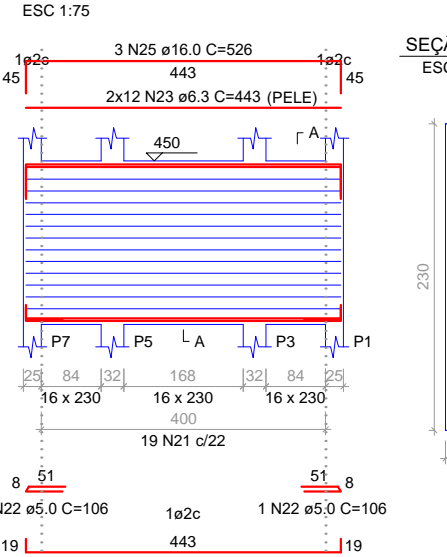
VI.ALA2A



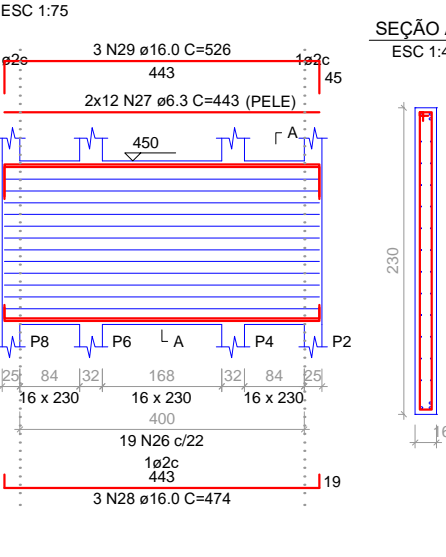
VI.ALA.2



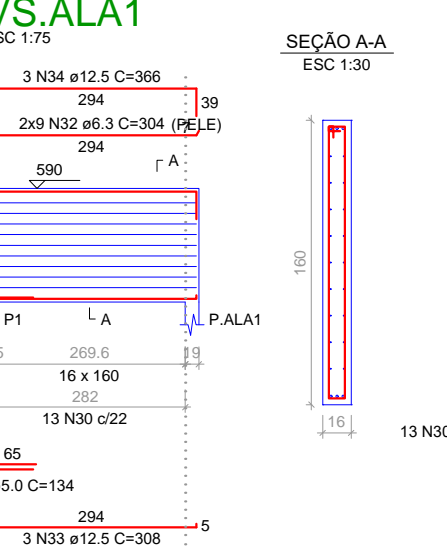
VI.CORTINA1



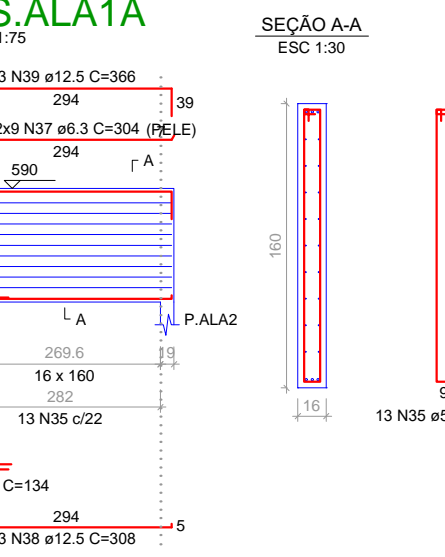
VI.CORTINA1A



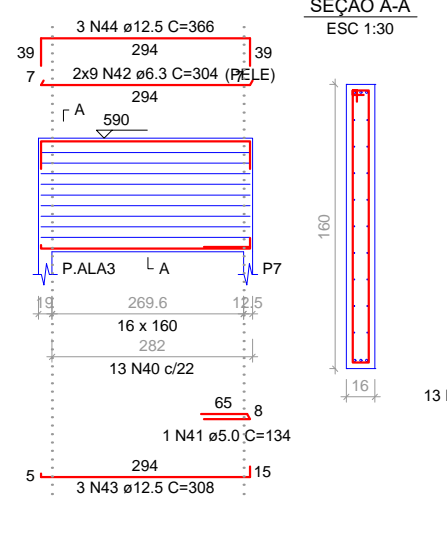
VS.ALA1



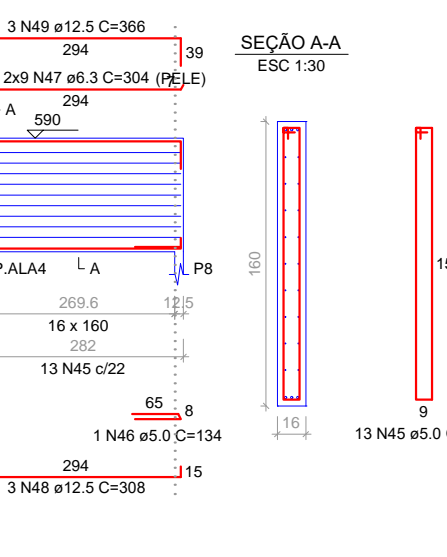
VS.ALA1A



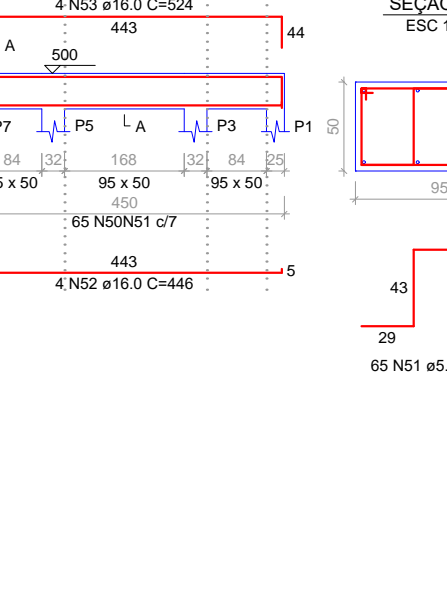
VS.ALA2



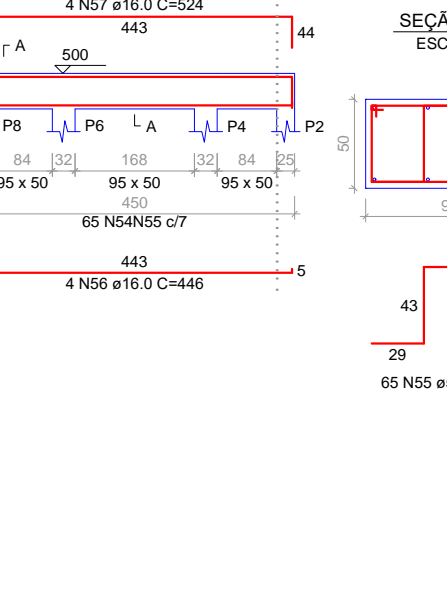
VS.ALA2A



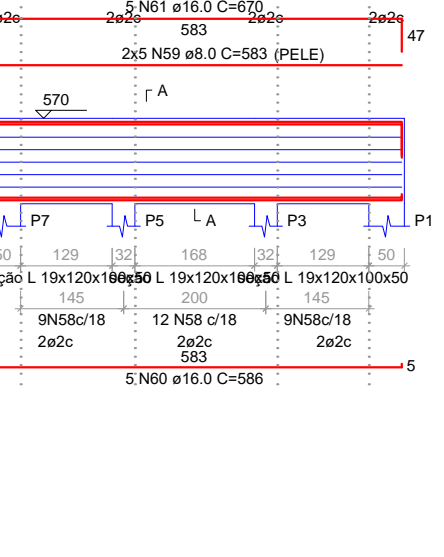
VS.APOIO1



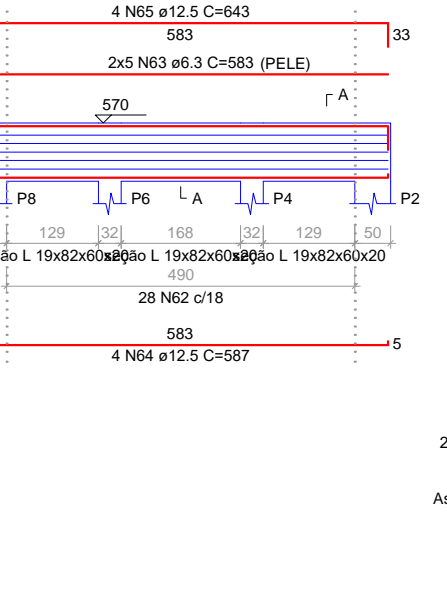
VS.APOIO1A



VSL.APOIO1



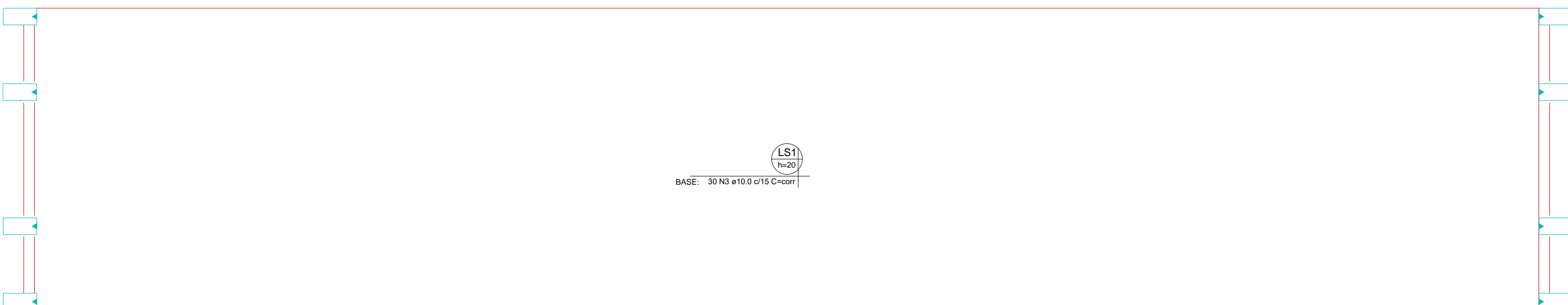
VSL.APOIO1A



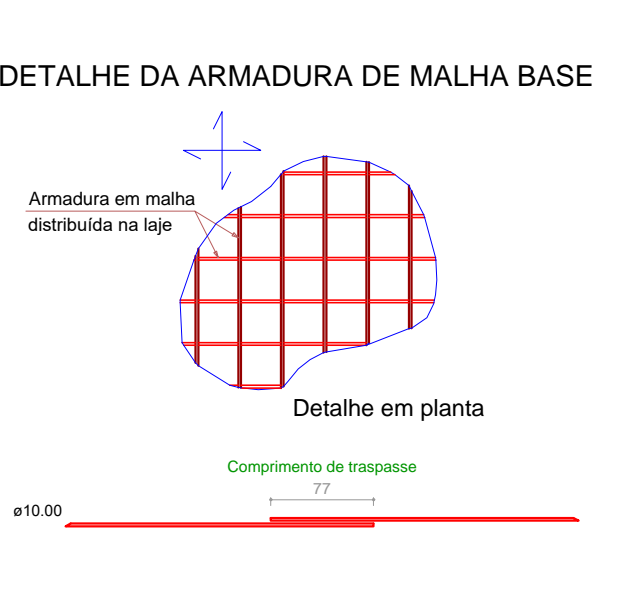
| RELAÇÃO DO AÇO (VIGA-PV-SUP) | | | | | | |
|------------------------------|------|----|-----------|-------|-------------|--------------|
| ELEMENTO | AÇO | N | DIAM (mm) | QUANT | C.UNIT (cm) | C.TOTAL (cm) |
| VI.ALA1 | CA60 | 2 | 5.0 | 6 | 136 | 816 |
| VI.ALA1 | CA60 | 4 | 16.0 | 3 | 331 | 1119 |
| VI.ALA1 | CA60 | 4 | 16.0 | 3 | 325 | 975 |
| VI.ALA1A | CA60 | 6 | 5.0 | 13 | 450 | 5915 |
| VI.ALA1A | CA60 | 8 | 6.3 | 24 | 304 | 7296 |
| VI.ALA1A | CA60 | 8 | 6.3 | 24 | 304 | 7296 |
| VI.ALA1A | CA60 | 10 | 16.0 | 3 | 373 | 1119 |
| VI.ALA1A | CA60 | 13 | 16.0 | 3 | 331 | 1119 |
| VI.ALA1A | CA60 | 12 | 5.0 | 16 | 136 | 816 |
| VI.ALA2 | CA60 | 14 | 16.0 | 3 | 325 | 975 |
| VI.ALA2 | CA60 | 17 | 16.0 | 3 | 331 | 1119 |
| VI.ALA2 | CA60 | 16 | 5.0 | 13 | 450 | 5915 |
| VI.ALA2 | CA60 | 18 | 6.3 | 24 | 304 | 7296 |
| VI.ALA2 | CA60 | 19 | 16.0 | 3 | 325 | 975 |
| VI.ALA2 | CA60 | 20 | 16.0 | 3 | 373 | 1119 |
| VI.CORTINA1 | CA60 | 21 | 5.0 | 19 | 475 | 9025 |
| VI.CORTINA1 | CA60 | 22 | 5.0 | 2 | 106 | 212 |
| VI.CORTINA1 | CA60 | 23 | 6.3 | 24 | 443 | 1422 |
| VI.CORTINA1 | CA60 | 24 | 16.0 | 3 | 474 | 1422 |
| VI.CORTINA1A | CA60 | 25 | 16.0 | 3 | 526 | 1578 |
| VI.CORTINA1A | CA60 | 26 | 5.0 | 19 | 475 | 9025 |
| VI.CORTINA1A | CA60 | 27 | 6.3 | 24 | 443 | 1422 |
| VI.CORTINA1A | CA60 | 28 | 16.0 | 3 | 474 | 1422 |
| VS.ALA1 | CA60 | 30 | 5.0 | 13 | 335 | 4555 |
| VS.ALA1 | CA60 | 31 | 5.0 | 1 | 134 | 134 |
| VS.ALA1 | CA60 | 32 | 6.3 | 18 | 304 | 5472 |
| VS.ALA1A | CA60 | 33 | 12.5 | 3 | 308 | 924 |
| VS.ALA1A | CA60 | 34 | 12.5 | 3 | 366 | 1098 |
| VS.ALA1A | CA60 | 35 | 5.0 | 1 | 134 | 134 |
| VS.ALA1A | CA60 | 36 | 5.0 | 1 | 134 | 134 |
| VS.ALA1A | CA60 | 37 | 6.3 | 18 | 304 | 5472 |
| VS.ALA1A | CA60 | 38 | 12.5 | 3 | 308 | 924 |
| VS.ALA1A | CA60 | 39 | 12.5 | 3 | 366 | 1098 |
| VS.ALA1A | CA60 | 40 | 5.0 | 1 | 134 | 134 |
| VS.ALA1A | CA60 | 41 | 5.0 | 1 | 134 | 134 |
| VS.ALA1A | CA60 | 42 | 6.3 | 18 | 304 | 5472 |
| VS.ALA1A | CA60 | 43 | 12.5 | 3 | 308 | 924 |
| VS.ALA1A | CA60 | 44 | 12.5 | 3 | 366 | 1098 |
| VS.ALA1A | CA60 | 45 | 5.0 | 1 | 134 | 134 |
| VS.ALA1A | CA60 | 46 | 5.0 | 1 | 134 | 134 |
| VS.ALA1A | CA60 | 47 | 6.3 | 18 | 304 | 5472 |
| VS.ALA1A | CA60 | 48 | 12.5 | 3 | 308 | 924 |
| VS.ALA1A | CA60 | 49 | 12.5 | 3 | 366 | 1098 |
| VS.APOIO1 | CA60 | 50 | 5.0 | 65 | 273 | 17745 |
| VS.APOIO1 | CA60 | 51 | 5.0 | 65 | 188 | 10500 |
| VS.APOIO1 | CA60 | 52 | 16.0 | 4 | 446 | 1764 |
| VS.APOIO1 | CA60 | 53 | 16.0 | 4 | 534 | 2056 |
| VS.APOIO1A | CA60 | 54 | 5.0 | 65 | 273 | 17745 |
| VS.APOIO1A | CA60 | 55 | 5.0 | 65 | 188 | 10500 |
| VS.APOIO1A | CA60 | 56 | 16.0 | 4 | 446 | 1764 |
| VS.APOIO1A | CA60 | 57 | 16.0 | 4 | 534 | 2056 |
| VS.APOIO1A | CA60 | 58 | 5.0 | 30 | 261 | 7830 |
| VS.APOIO1A | CA60 | 59 | 8.0 | 10 | 556 | 2930 |
| VS.APOIO1A | CA60 | 60 | 16.0 | 5 | 596 | 2930 |
| VS.APOIO1A | CA60 | 61 | 16.0 | 5 | 670 | 3350 |
| VS.APOIO1A | CA60 | 62 | 5.0 | 28 | 185 | 5180 |
| VS.APOIO1A | CA60 | 63 | 6.3 | 10 | 653 | 6530 |
| VS.APOIO1A | CA60 | 64 | 12.5 | 4 | 587 | 2348 |
| VS.APOIO1A | CA60 | 65 | 12.5 | 4 | 643 | 2572 |

| RESUMO DO AÇO (Vigas-PV-Sup.) | | | |
|-------------------------------|-----------|-------------|----------------|
| AÇO | DIAM (mm) | C.TOTAL (m) | PESO + 0% (kg) |
| CA60 | 6.3 | 781.7 | 191.3 |
| CA60 | 8.0 | 56.3 | 29 |
| CA60 | 12.5 | 130.1 | 125.3 |
| CA60 | 16.0 | 294.2 | 448.5 |
| CA60 | 5.0 | 1334.8 | 205.7 |
| CA60 | | | 1656.5 |

Volume de concreto (C-30) = 20.20 m³
Área da forma = 9.16 m²



Armação inferior do radier do pavimento SUPERIOR (Eixo X)

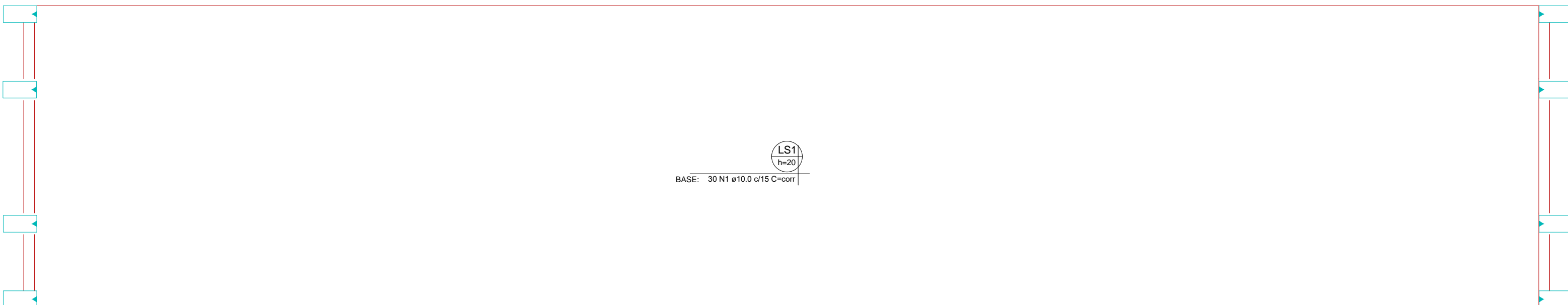


| RELAÇÃO DO AÇO (LAJE-PV-SUP) | | | | | | |
|------------------------------|------|---|-----------|-------|-------------|--------------|
| ELEMENTO | AÇO | N | DIAM (mm) | QUANT | C.UNIT (cm) | C.TOTAL (cm) |
| Negativo X | CA60 | 1 | 10.0 | 30 | corr | 68040 |
| Negativo Y | CA60 | 2 | 10.0 | 150 | 442 | 66300 |
| Positivo X | CA60 | 3 | 10.0 | 30 | corr | 68040 |
| Positivo Y | CA60 | 4 | 10.0 | 150 | 442 | 66300 |

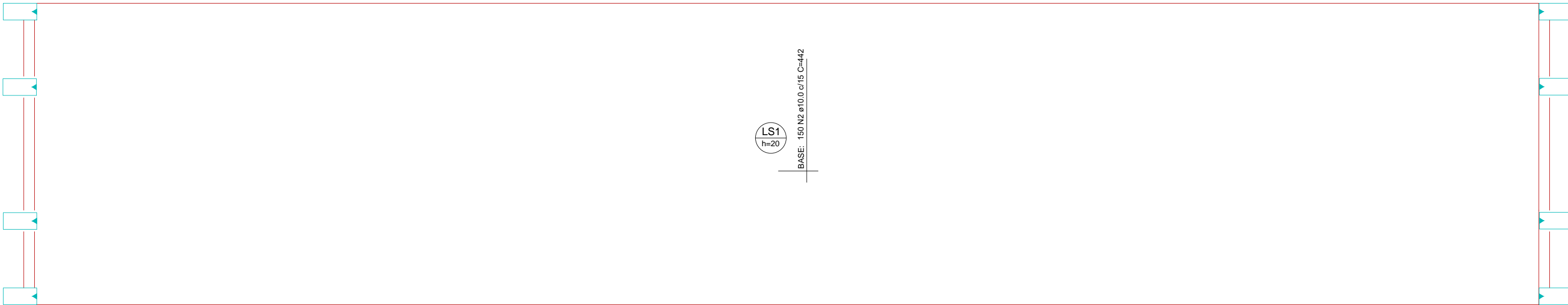
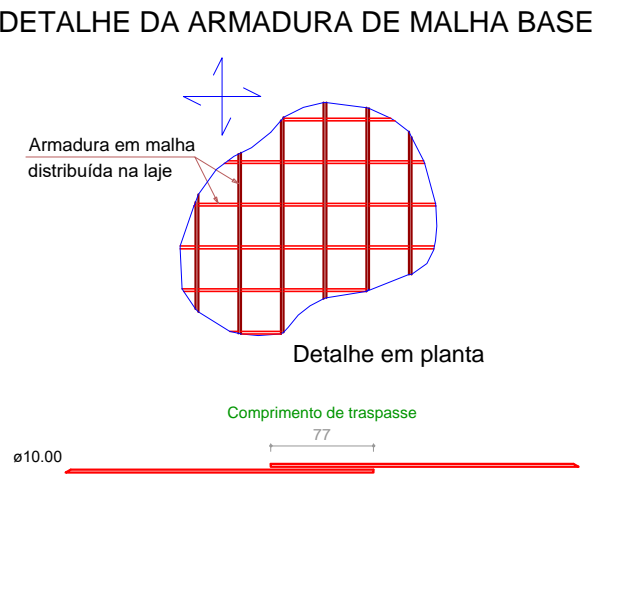
RESUMO DO AÇO

| AÇO | DIAM (mm) | C.TOTAL (m) | PESO + 0% (kg) |
|-------------|-----------|-------------|----------------|
| CA60 | 10.0 | 266.8 | 1656.5 |
| CA60 | | | 1656.5 |

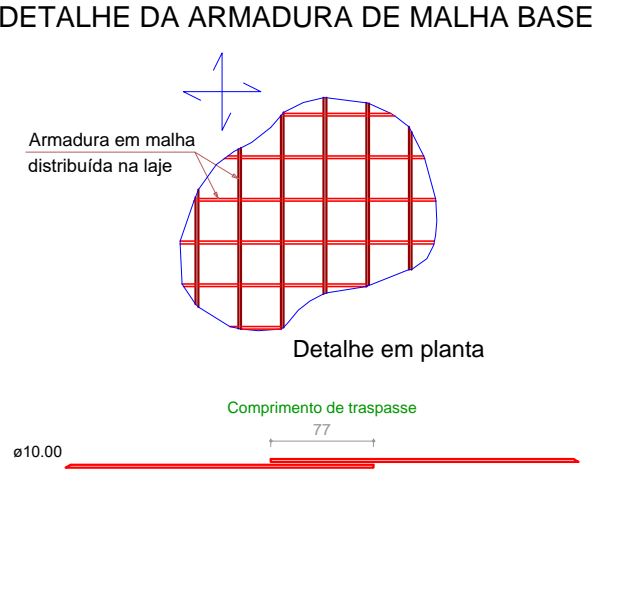
Volume de concreto (C-30) = 20.20 m³
Área da forma = 9.16 m²



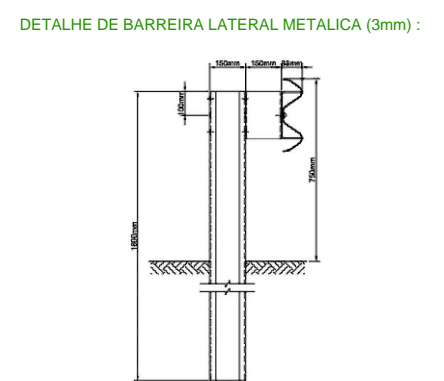
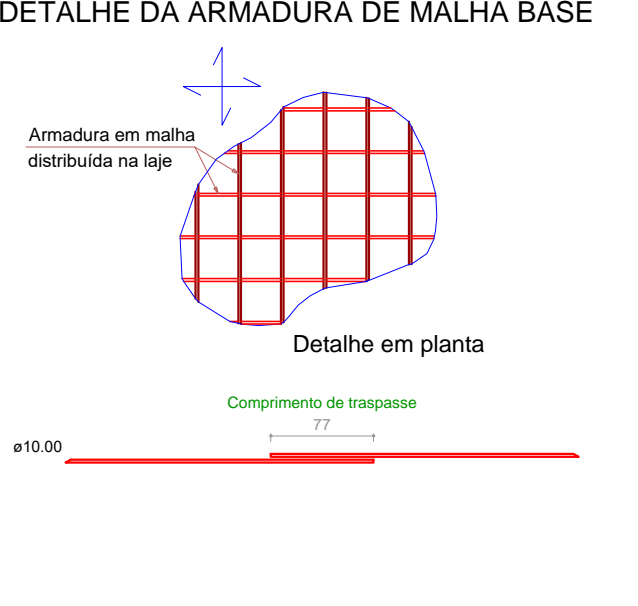
Armação superior do radier do pavimento SUPERIOR (Eixo X)



Armação superior do radier do pavimento SUPERIOR (Eixo Y)



Armação inferior do radier do pavimento SUPERIOR (Eixo Y)



- Cargas (Tren tipo 4E7):
- *Acidental Distribuída Concreto: q = p * CIV * CNF * CIA = 500 * 1.34 * 1.05 * 1.25 = 880 Kg/m²
- *Acidental Concentrada Concreto: Q = P * CIV * CNF * CIA = 7500 * 1.34 * 1.05 * 1.25 = 13200 Kg
- *A manutenção e terraplenagem serão por conta do Contratante.
- *Garantia da estrutura: 50 anos, garantia da pintura: 90 dias.
- *Deixar furos D:5cm, pr escoamento de águas pluviais e drenagem.
- *Hidrologia: conforme orientação e responsabilidade do Contratante.

| | | | |
|------------------------------------|---|----------------------|-------------|
| TIPO DE OBRA | PONTE MISTA DE CONCRETO E AÇO DE 24 METROS | | |
| PROPRIETÁRIO | PREFEITURA MUNICIPAL DE FIGUEIROPOLIS D' OESTE - MT | | |
| LOCAL | CORREGIO BRIGADENIR-AREA RURAL (COMUNIDADE SANTAHERMINIA) | | |
| RESPONSÁVEIS TÉCNICOS | ASSUNTO | PLANTA BAIXA E CORTE | |
| ROBERTO MOREIRA CREA: MT 035490 | ESCALA | INDICADA | DATA: MARÇO |